

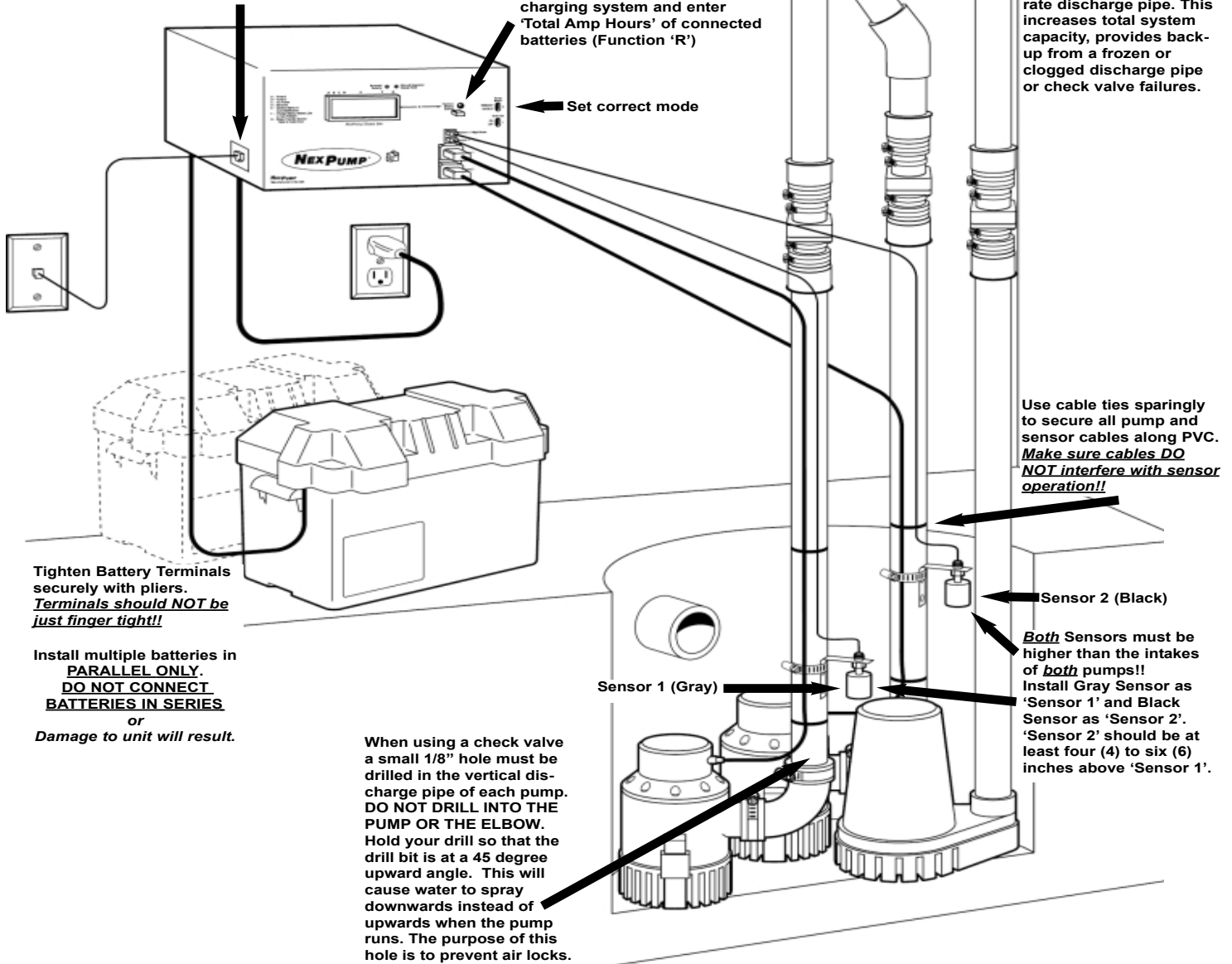


The Intelligent Sump Pump!

Installation Guide

To Register your NexPump go to http://www.nexpump.ca/index.php?main_page=page_3 Enter complete serial number (include letters) and your complete PIN number on initial registration page. On the next page enter all required information, after a successful registration you will receive a confirming Email.

The NexPump Auto-Notification needs a working phone line to function. Use ONLY a RJ11 phone connector and it is highly recommended to install an inline phone line surge protector before the NexPump Unit.



After Installation is complete, perform a 'Battery Reset' to start charging system and enter 'Total Amp Hours' of connected batteries (Function 'R')

Set correct mode

It is recommended to install at least one separate discharge pipe. This increases total system capacity, provides back-up from a frozen or clogged discharge pipe or check valve failures.

Use cable ties sparingly to secure all pump and sensor cables along PVC. Make sure cables DO NOT interfere with sensor operation!!

Sensor 2 (Black)
Both Sensors must be higher than the intakes of both pumps!!
Install Gray Sensor as 'Sensor 1' and Black Sensor as 'Sensor 2'. 'Sensor 2' should be at least four (4) to six (6) inches above 'Sensor 1'.

Sensor 1 (Gray)

When using a check valve a small 1/8" hole must be drilled in the vertical discharge pipe of each pump. **DO NOT DRILL INTO THE PUMP OR THE ELBOW.** Hold your drill so that the drill bit is at a 45 degree upward angle. This will cause water to spray downwards instead of upwards when the pump runs. The purpose of this hole is to prevent air locks.

Tighten Battery Terminals securely with pliers. Terminals should NOT be just finger tight!!

Install multiple batteries in **PARALLEL ONLY. DO NOT CONNECT BATTERIES IN SERIES** or **Damage to unit will result.**

Box Contents

- Qty. 1 - NexPump Ai System Unit
(AN units have Auto Notification Module Installed)
- Model Ai5600-xx
Qty. 2 - 4000 GPH High Capacity Pumps w/Adapters
- Model Ai2800-xx
Qty. 1 - 4000 GPH High Capacity Pump w/Adapter
- Qty. 1 - Gray Sensor with SS mounting clamp (Sensor 1)
- Qty. 1 - Black Sensor with SS mounting clamp (Sensor 2)
- Qty. 1 - Battery Extension Cable
- Qty. 1 - Owners Manual

Congratulations! You have just purchased the most sophisticated sump pump system on the market today. Take a moment to read over the owners manual to learn more about some of the programmable functions that you can enable on your NexPump. Please feel free to email or call us with any questions you may have about your NexPump.

Thank You for purchasing a NexPump!!

Contact Information

Phone/Fax - 1-877-801-My-Ai (6924)
Support Phone - 630-365-4639 Option 2
Support Email - support@nexpump.ca
Sales Email - sales@nexpump.ca
http://www.nexpump.ca/index.php?main_page=support